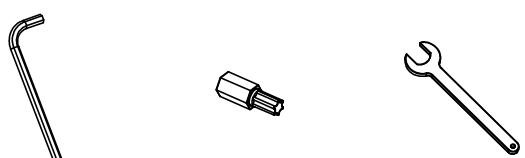
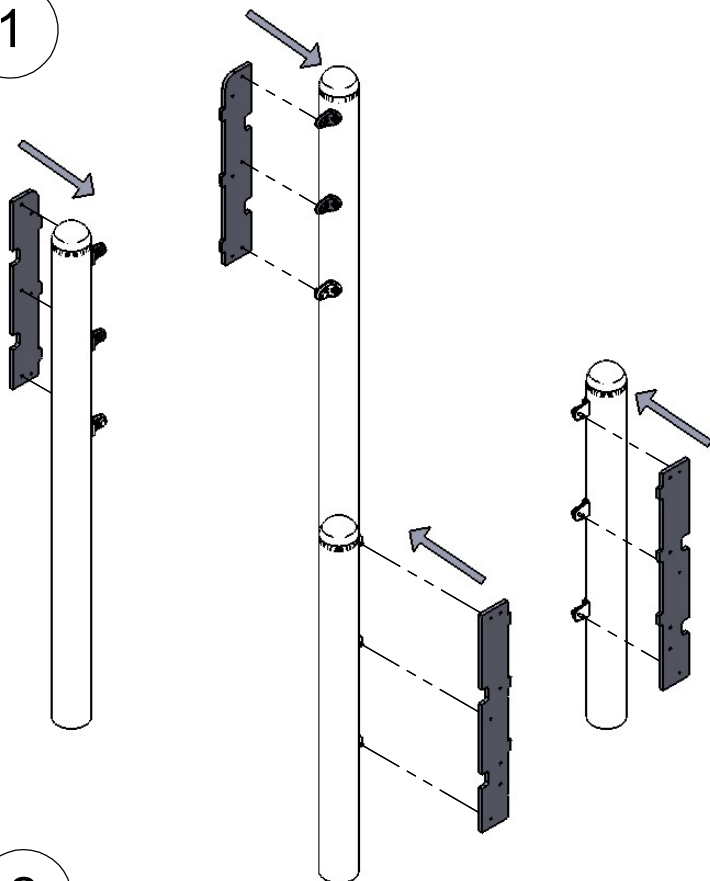


INST_12_30

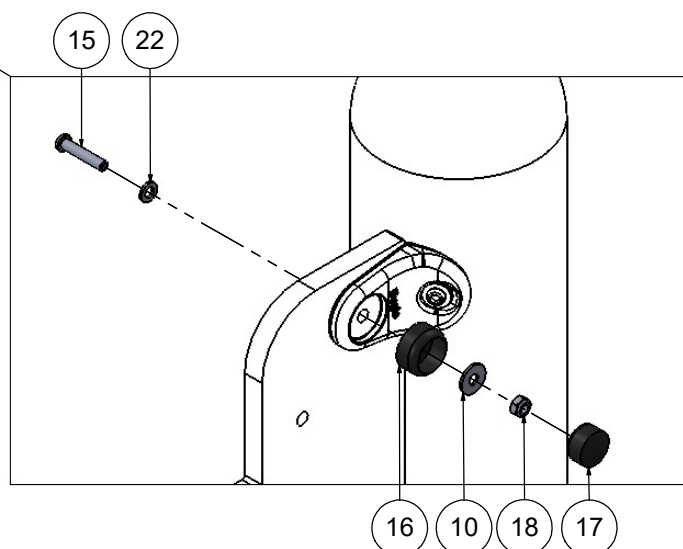
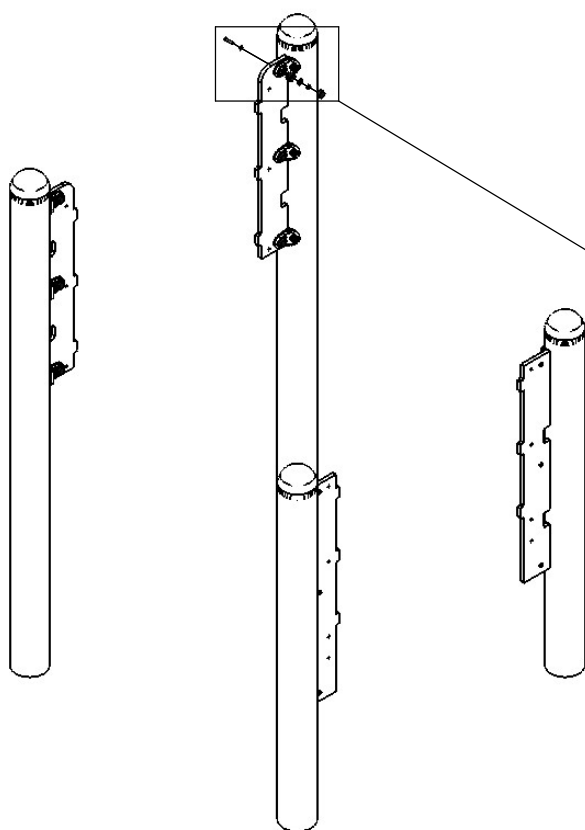


Nr. 4, 5 Nr. T30 Nr. 10

1

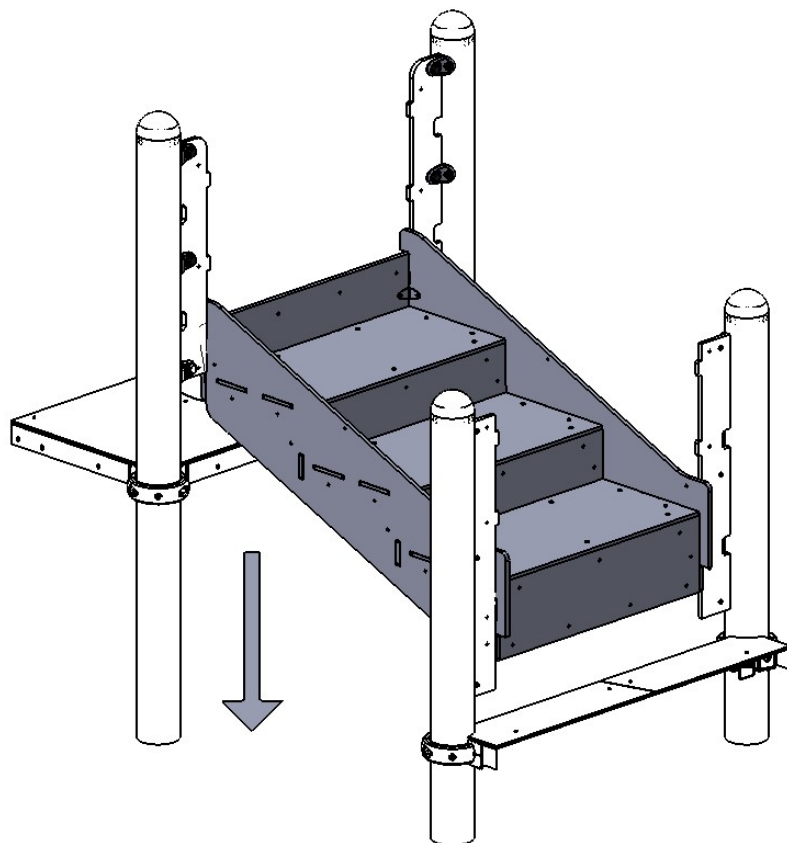


2

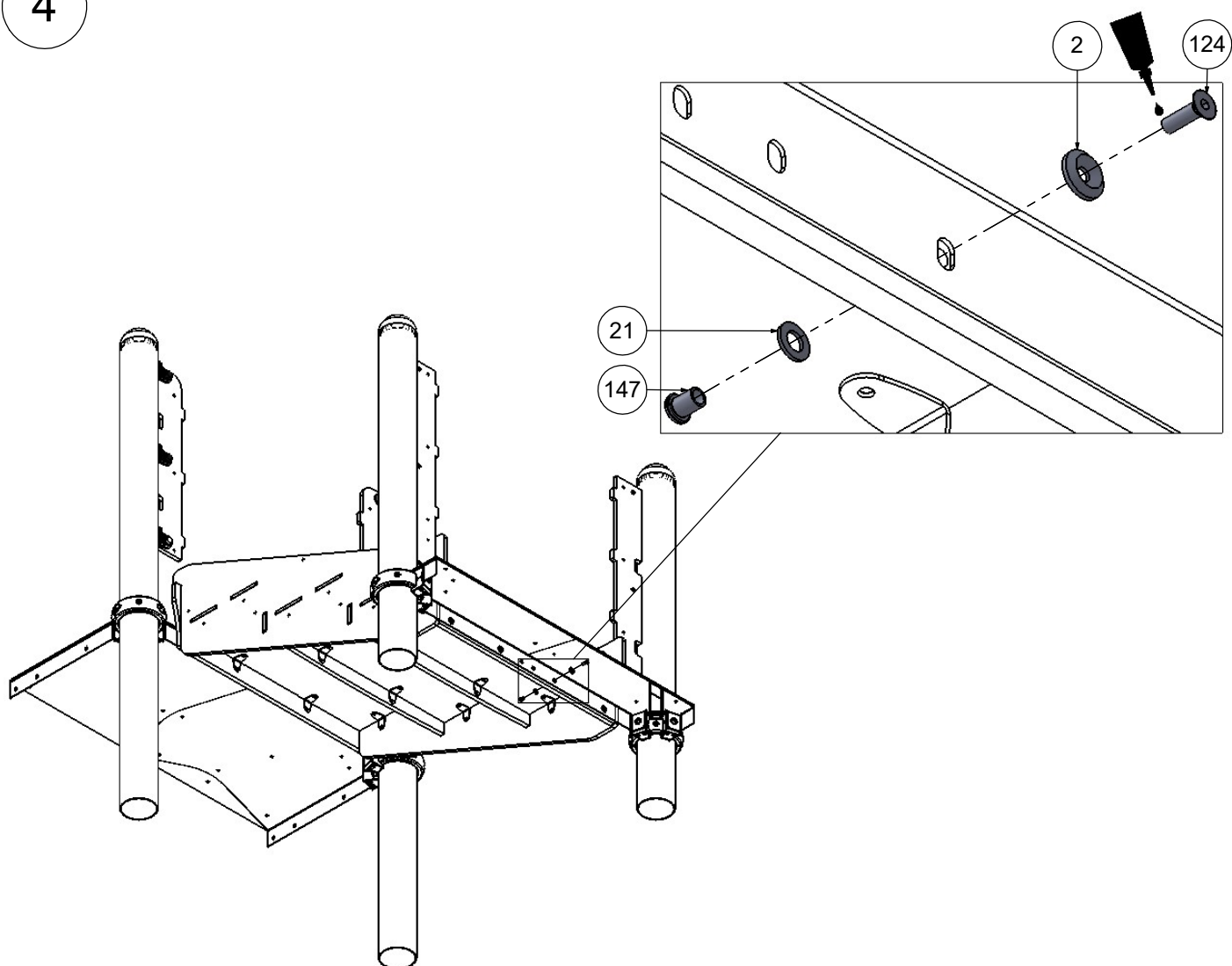


Nr	Σ	Element		
2	8		-	W6x60
9	4		ISO 7380	M6x25
10	12		DIN 9021	6x18
14	28		ISO 7380	M6x12
15	12		ISO 7380	M6x30
16	12		-	K1_d21_B
17	12		-	Z1_d21_B
18	12		DIN 985	M6
21	40		DIN 125	8x16
22	44		DIN 125	6x12
29	14		-	K_5_A2_g2_G_v2
58	1		-	LOCTITE
98	2		-	F20X_44_HP_g13_v1
124	8		DIN 7991	M6x20
147	40		-	M6x10

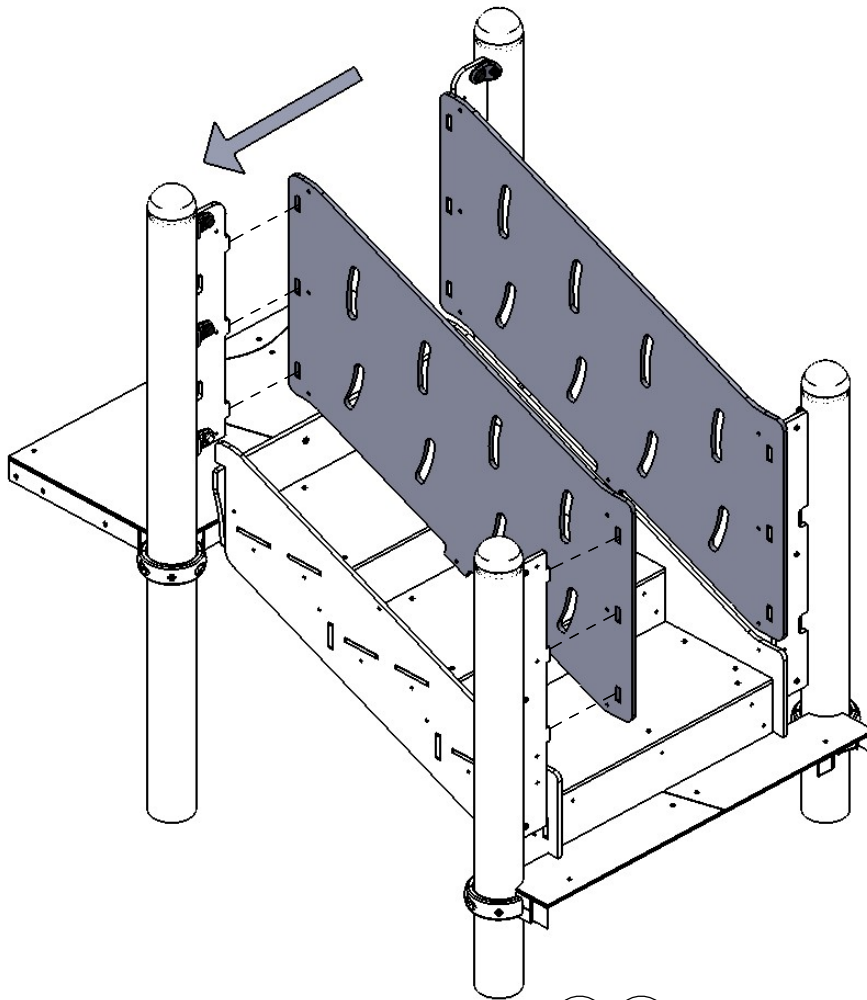
3



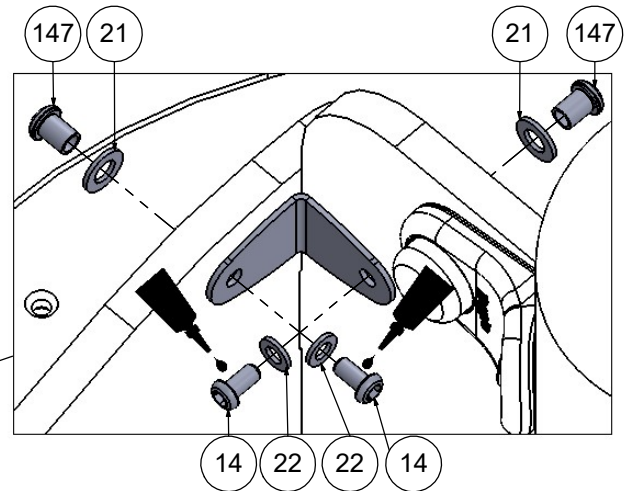
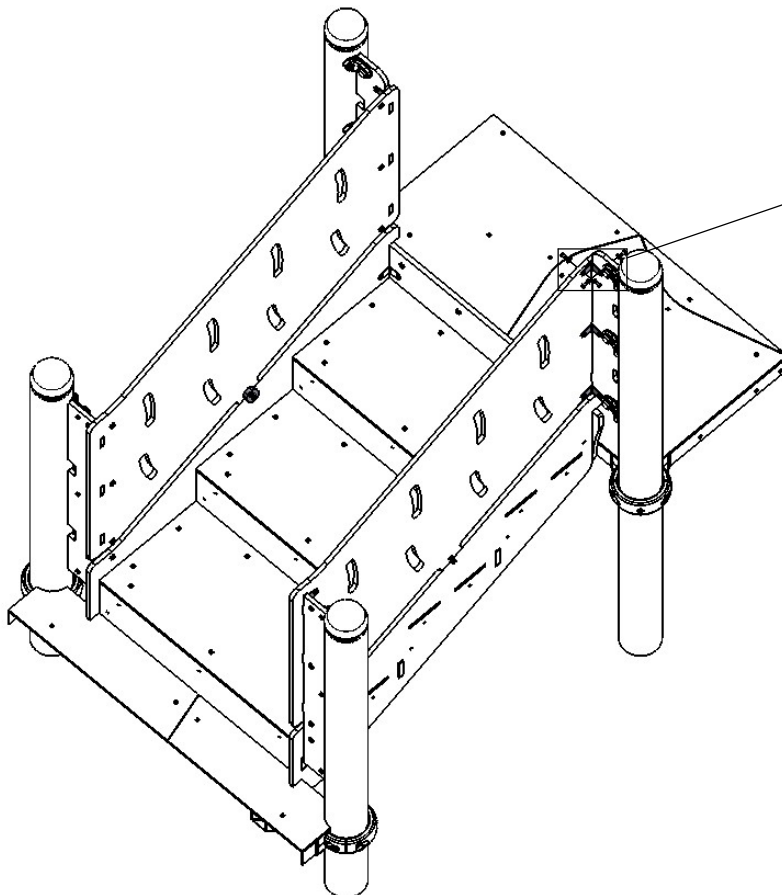
4



5



6



7

